



## NBC30-IR Outdoor Night-Vision Network Camera

MPEG4 + Motion-JPEG Dual Mode, IP67, PoE, Audio, 300k CMOS, Day/Night

Part No.: **550932**

---

The INTELLINET NETWORK SOLUTIONS NBC30-IR Outdoor Night-Vision Network Camera is designed for security surveillance applications, and comes fully equipped with state-of-the-art features that set it apart from other network cameras on the market today.

### Excellent Video Quality

Because the NBC30-IR Outdoor Night-Vision Network Camera uses a progressive-scan CMOS sensor, it provides sharp video images with dramatic lifelike color representation.

### Surveillance 24 Hours a Day, Even in Complete Darkness

This camera is equipped with an IR lens which automatically engages as the light levels drop. The camera also supports third-party IR illumination, allowing for the surveillance of larger areas.

### Auto-Setup

No need to worry about complex network setup procedures. The installation wizard provides an easy setup that allows a non-technical person to begin using the camera right away.

### SSL Encryption

Secure network connections using data encryption between the camera and the network client for additional data security.

### Dual Mode: Simultaneous MPEG4 + Motion-JPEG Streaming

The NBC30-IR Outdoor Night-Vision Network Camera supports MPEG4 as well as Motion-JPEG video formats, providing superior quality and, at the same time, continuing to support existing applications. MPEG4, on the other hand, allows you to transmit a larger amount of data over the same amount of bandwidth while providing smooth and seamless viewing.

### Bi-Directional Audio Support

Attaching a microphone and loudspeakers to the NBC30-IR Outdoor Night-Vision Network Camera will allow you to listen and talk using the two-way audio support. This is ideal for most security and surveillance applications.

### Integrated DDNS Client

Utilize the free DYNDNS service (like DYNDNS.org) in order to connect to your camera, even if you do not have a static IP address assigned by your ISP (Internet service provider). This feature lets you easily set up a URL that can be used to access the camera through the Internet using any Web browser.

### Unique Windows Live Messenger Support

Set up a free MSN / Hotmail account for the network camera and connect to it via Windows Live Messenger as if it were a regular contact in your buddy list. Remote access cannot be any easier.

### Power over Ethernet

The NBC30-IR Outdoor Night-Vision Network Camera supports the 802.3af standard, allowing it to be installed in locations where an AC power source is not readily available. Simply plug the camera into a PoE-compliant switch and begin transmitting power as well as data over the Cat5e or Cat6 network cabling.

# NBC30-IR Outdoor Night-Vision Network Camera

MPEG4 + Motion-JPEG Dual Mode, IP67, PoE, Audio, 300k CMOS, Day/Night

Part No.: **550932**

---

## Features:

- Excellent image quality with 30 fps full-motion video in all resolutions
- Progressive-scan image sensor with OmniPixel2 technology
- Supports image resolutions up to 640 x 480 (VGA)
- IP67 rated, waterproof and dust tight
- For surveillance in low light or nighttime conditions, minimum 0 lux (complete darkness)
- Infrared LEDs with 35 m effective range
- Audio support, full duplex, up to 8 kHz
- Video access through any standard Web browser
- Integrated motion detection with pre- and post-alarm image/video buffering
- Event-triggered FTP and e-mail upload of still images and videos
- External microphone input connector
- External speaker output connector
- Terminal block for external sensors or external alarm devices
- Supports simultaneous MPEG4 and Motion-JPEG image compression
- Selectable video buffer for smoother video streaming
- Controllable frame rate
- Supports MPEG4 video streaming with CBR (constant bit rate) and VBR (variable bit rate) modes
- IR sensitive, supports external IR illuminators
- Mobile phone streaming live video through 3GPP / ISMA / RTSP
- Mobile phone live image through 2.5 WAP
- Windows Live Messenger support
- Supports privacy zone and text overlay functionality
- MPEG4 + Motion-JPEG + 3GPP mobile phone streaming, audio and 10x digital zoom
- Supports HTTPS encryption for enhanced security
- Supports UPnP with UPnP port forwarding capability
- Integrated e-mail, FTP, DDNS and DHCP client
- Supports IEEE 802.3af Power over Ethernet injectors, mid- and endspans
- Easy-to-use 16-channel camera viewing and recording utility included (not compatible with NSC10 and NSC18 cameras)
- Requires the use of a IEEE 802.3af Power over Ethernet injector (not included)
- Three-Year Warranty

## Specifications:

### Standards

- » IEEE 802.3 (10Base-T Ethernet)
- » IEEE 802.3u (100Base-TX Fast Ethernet)
- » IEEE 802.3af (Power over Ethernet)

### General

- » 32-bit ARM9 RISC CPU
- » 8 MByte flash memory
- » 64 MByte SDRAM
- » Supported image resolutions: 640 x 480, 320 x 240 and 160 x 120
- » Supported video compression formats:
  - Motion-JPEG
  - MPEG4 Part2 (ISO/IEC 14496-2), Profile: SP
- » Video frame rate:
  - Motion JPEG: up to 15 fps at 640 x 480
  - Up to 30 fps at 640 x 480
- » Audio support:
  - Full duplex
  - Bandwidth: G.711 PCM, 8 kHz, 64 kbit/s
  - Audio input: 3.5 mm (1/8") microphone input jack
  - Audio line out jack: 3.5 mm (1/8")

- » Uni- and Multicast
- » 1 x alarm input (5 V / 12 V DC)
- » 1 x alarm output (max. 30 W)
- » Protocols supported: TCP/IP, DHCP, PPPoE, ARP, ICMP, FTP, SMTP, DNS, NTP, UPnP, RTSP, RTP, HTTP, TCP, UDP, 3GPP / ISMA / RTSP, Bonjour
- » Certifications: FCC Class B, RoHS, CE

#### Network

- » LAN connector: RJ45 port to connect to 10/100 Mbps Ethernet

#### Image Sensor and Lens

- » Omnivision 1/4" progressive-scan CMOS sensor with OmniPixel2 technology
- » VGA resolution (664 H x 490 V)
- » S/N ratio: 50 dB (max.)
- » Pixel size: 6.0  $\mu\text{m}$  x 6.0  $\mu\text{m}$
- » Manual brightness, contrast, saturation, hue control
- » Minimum illumination: 0 lux with IR LEDs on
- » IR LEDs, effective range 35 m (110 ft.)
- » IR wavelength: 850 nm
- » Mechanical IR cut filter with 3 settings: On, Off and Auto (with adjustable threshold)
- » Focal length 6.0 mm, horizontal field of view 33°, object distance 0.2 m to infinity
- » Maximum relative aperture F2.0

#### Users and Security

- » 10 user accounts
- » 3 different access levels: administrator, operator and viewer
- » Password-protected access to the video streams, or access without password
- » HTTPS (SSL v3)

#### Power

- » Power consumption: 5.0 Watts (maximum)
- » Built-in IEEE 802.3af PoE (Power over Ethernet)

#### LEDs

- » Power
- » Network connection
- » Camera operation

#### Environmental

- » Housing: aluminum, weatherproof IP67 rated
- » Dimensions: 265 x 85 mm (10.3 x 3.3 in.)
- » Weight: 3.6 kg (7.9 lbs.)
- » Operating temperature: -30 – 50°C (-22 – 122°F)
- » Operating humidity: 20 – 80% RH, non-condensing
- » Storage temperature: 0 – 60°C (0 – 149°F)

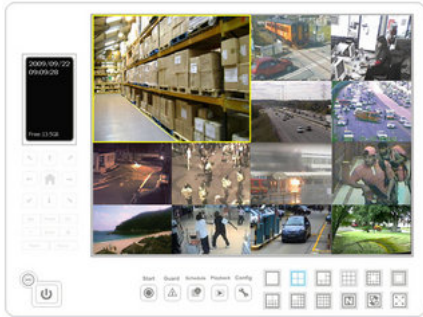
#### System Requirements

- » Pentium 4 1.8 GHz (or equivalent AMD)
- » 64 MB RAM video card
- » Windows 2000, XP, Vista, Windows 7, Linux, Mac OS X
- » Computer with network connection
- » Web browser support:
  - MS Internet Explorer 5.0 or higher (ActiveX)
  - Mozilla Firefox 3.x (Java)
  - Safari (Java)

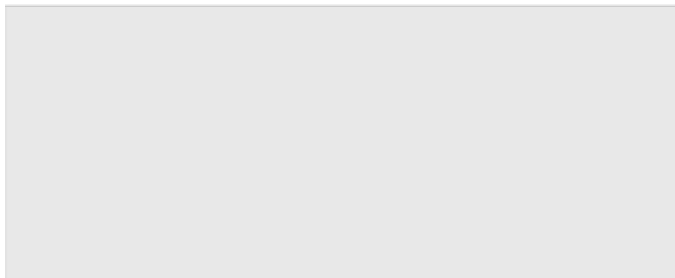
#### Package Contents

- » NBC30-IR Outdoor Night-Vision Network Camera
- » User manual
- » Camera mounting bracket
- » Software CD





For more information on INTELLINET NETWORK SOLUTIONS products, consult your local dealer or visit [www.intellinet-network.com](http://www.intellinet-network.com).



COPYRIGHT © INTELLINET NETWORK SOLUTIONS

All names of products or services mentioned herein are trademarks or registered trademarks of their respective owners. Distribution and reproduction of this document, use and disclosure of the contents herein are prohibited, unless specifically authorized.