

MAXHUB Interactive Flat Panel E2 Series

EXCELLENCE IN EDUCATION

Best-in-class performance comes easily with the MAXHUB Interactive Flat Panel E2 Series. Combining a pro-grade display with effortless operation and innovative safety features to protect students' health, this classroom all-star meets the unique needs of young learners and those who teach them.



> A display that focuses attention, and fuels interaction.

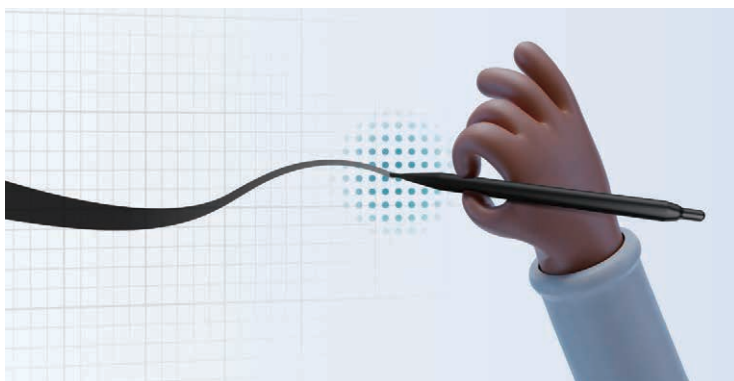
Content comes alive on the E2 Series' 4K, high-contrast screen. Images, text and handwriting are rendered with astonishing sharpness and professional-grade color accuracy. The flicker-free screen reduces eye strain, and anti-glare glass eliminates distracting reflections.

- Flicker-free screen
- Anti-glare glass
- 4K resolution
- Color $\Delta E \leq 2$

> Easy on the eyes.

TÜV-certified to protect eyes and preserve students' vision, the E2 Series' display minimizes visual fatigue by reducing blue light and reflections, eliminating flicker, and automatically adjusting brightness to adapt to the indoor environment.

- Ambient light sensor
- Eye-care mode
- TÜV Certified Low Blue Light
- TÜV Certified Flicker Free



> Write naturally, right from the start.

Providing a natural writing experience with no learning curve, the E2 Series enables teachers and students alike to write easily, silently and efficiently.

- Zero Bonding technology.
- Double nib design, 3mm fine nib.
- Up to 40 touch points.*
- Less than 40ms writing latency.

* OS dependent.

> Share ideas, not germs.

Designed to inhibit bacterial reproduction and other risks, the E2 Series features an optional antimicrobial screen, which is specially coated and manufactured with 3mm tempered glass to protect users from accidental injury.

- SGS Certified.

* Optional antimicrobial display.



Maximize utility with simplicity.

Bringing BYOD convenience and capabilities to the classroom, the E2 Series features an all-in-one Type-C interface for your mobile device.

Front Type-C interface for all-in-one video, audio, touch, network and charging transmission.

Supports audio and display up to 4K @ 60 fps.

Supports charging up to 65W.

Laptop internet access via Type-C interface on web-connected the E2 Series displays.



Thinks fast, responds instantly.

- 1000 Mbps Network Adapter
- 4GB RAM, 2.0 GHz quad core CPU



Audio that amplifies understanding.

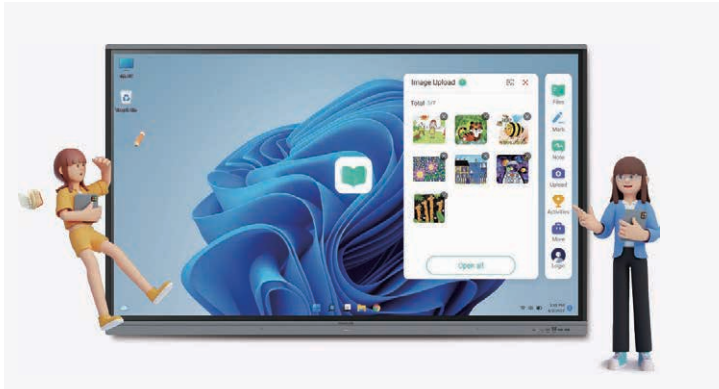
- 2*12W output power



Backup with dual system.

- Android 11 + Windows*

* Microsoft Windows system is supported on optional OPS module.



Bytello Class

Teach anytime, anywhere.

Cloud-based lesson preparation lets teachers access and share lesson plans with one another anytime, anywhere.



Bytello OS

The ultimate teacher's aides.

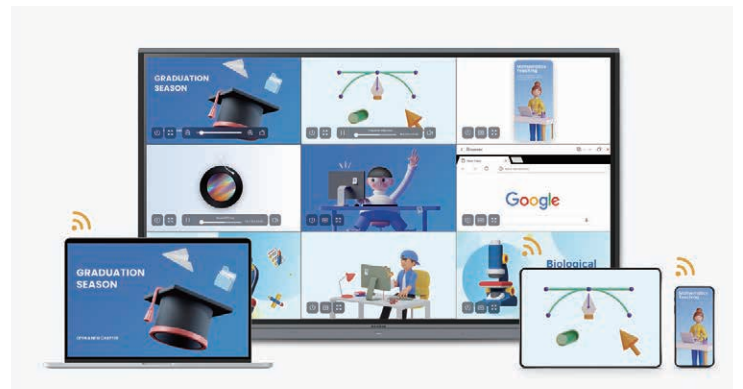
Customize the system homepage and easily access personal account in the exclusive teacher space within Bytello OS.



Bytello DMS

The classroom companion for IT teams.

Bytello DMS makes it easy to set up program operation schedules to automate and simplify IT operations. IT team can also monitor the usage status of equipment and access data for continuous optimization and reporting.



Bytello Share

Teach your students via Bytello Share.

Secure two-way screen sharing on the E2 Series for up to 9 students simultaneously while compatible with all major screen-sharing protocols, including Miracast, Airplay and Chromecast.

MAXHUB interactive flat panel E2 Series

Model Name: E8620

Best-in-class performance comes easily with the MAXHUB Interactive Flat Panel E2 Series. Combining a pro-grade display with effortless operation and innovative safety features to protect students' health, this classroom all-star meets the unique needs of young learners and those who teach them.



Professional 4K Display

High Color Accuracy, $\Delta E \leq 2$
Wide Color Gamut, NTSC 72%



Versatile USB Type-C

Integrate 65watt power charge, video, audio, touch, internet access features into one interface



Eyes Care

TUV Low Blue light, TUV Flicker-free with ambient light sensor and anti-glare glass



Natural Writing Experience

Less than 40ms writing latency in zero parallax screen



Productive Teaching

Preinstall with course delivery apps and widgets



Responsive Hardware

Powerful built-in 2.0Ghz quad core CPU and 4GB RAM, high speed 1000Base-T network adapter



Built-in speaker

2.0 Channel
2x 16W



Hygienic Design

SGS certified antibacterial components

| Display | |
|-----------------------|---|
| Model | E8620 |
| Diagonal Size (inch) | 86 |
| Screen Level | A-Level |
| Glass Treatment | Anti-glare, Tempered |
| Glass Thickness | 3mm |
| Glass Hardness | 9H |
| Anti-bacterial | TÜV / SGS / SIAA Certificated Stylus, Power Button, Protection Glass (optional) |
| Bonding | Zero parallax |
| Viewing Angle | 178° (H/V) |
| Aspect Ratio | 16:9 |
| Backlight | DLED |
| Backlight Life (typ.) | ≥ 50,000 Hours |
| Resolution | 3840 × 2160 |
| Contrast Ratio | 1200 : 1 (Typ.) 4000 : 1 (Dynamic.) |
| Color Depth | 1.07B (10bit) |
| Color Gamut (typ.) | 72% NTSC |
| Color Accuracy | Delta E ≤ 2 |
| Eyes Care | TÜV Eye Comfort TÜV Flicker Free |
| Refresh Rate | 60Hz |
| Response Time | 8ms |
| Brightness (typ.) | 380cd/m ² |

| Built-in System | |
|------------------|--------------------------|
| Operating System | Android 11.0 |
| RAM | 4GB |
| ROM | 32GB |
| CPU | 2.0GHz quad core ARM A55 |
| GPU | Mali-G52 MP2 |

| POWER | |
|-----------------------------|--|
| Power Supply | AC 100~240V 50/60Hz |
| Power Consumption (standby) | ≤ 0.5W |
| Power Consumption (maximum) | 500W (including OPS) 300W (excluding OPS) |

| Environment | |
|-----------------------|------------|
| Operating Temperature | 0°C ~40°C |
| Storage Temperature | 20°C ~60°C |
| Operating Humidity | 10%-90% RH |
| Storage Humidity | 10%-90% RH |

| Speaker | |
|---------------|----------------|
| Sound Channel | 2.0 |
| Power Output | 2 × 16W (Max.) |

| Software | |
|---------------|---|
| Screen Share | Yes |
| On Board Apps | Browser, Cloud Drive, System Keeper, Note, Palette, Annotate, Timer, Screen Record, Split Screen, Screen Lock, etc. |
| Power Output | Yes |

| Interactivity | |
|---|--|
| Touch Sensor | Infrared (IR) |
| Multitouch Capabilities | Up to 40 touch points (OS dependent) |
| Touch Tool | Finger, Gesture, Stylus |
| Response Time | ≤ 5ms |
| Touch Accuracy | ±1.5mm |
| Object Recognition Range | ≥ 3mm |
| Stylus Type | Passive dual nibs |
| Supported Operating System (Touch Return) | Windows10 / Windows8 / Windows7 / WindowsXP / Android / Linux / Mac OS X / Chrome OS |

| Physical Specification | |
|--------------------------------|---------------------------|
| Dimension (W x H x D) | 1956.7 × 1159.7 × 99.6 mm |
| Shipping Dimension (W x H x D) | 2110 × 1283 × 225 mm |
| VESA | 800 × 600 mm, M8 × 25 mm |
| Net Weight | 60.10 Kg |
| Gross Weight | 77.00 Kg |

| Accessory | |
|-------------------------------|-----|
| 3m Power Cord | x 1 |
| 1.4m HDMI Cable | x 1 |
| 5m USB Touch Cable (Type A-B) | x 1 |
| 1.8m USB Type-C Cable | x 1 |
| Remote Control | x 1 |
| Wall Mount | x 1 |
| Stylus | x 2 |
| Wireless Adapter | x 1 |

| Connectivity | |
|--------------------|---|
| OPS Slot | Yes, 3840 x 2160 @ 60fps |
| OPS Compatible | OPS62A, 11th gen Intel i5/i7 |
| Wired | 1000BaseT RJ45 x 2 |
| Wi-Fi | 2.4GHz/5GHz band 802.11ac/b/g/n/a/ax, Wi-Fi 6 supported |
| HDMI | HDMI 2.0 In x 3 HDMI Out x 1 (Up to 4K @ 60fps) |
| Touch | USB Type-B x 2 |
| Control | RS-232 x 1 |
| Analog | VGA In x 1 |
| Audio | Audio In x 1 Audio Out x 1 S/PDIF Out x 1 |
| USB Type-A | USB 3.0 x 4 USB 2.0 x 1 |
| Multifunction Port | USB Type-C x 1 |

