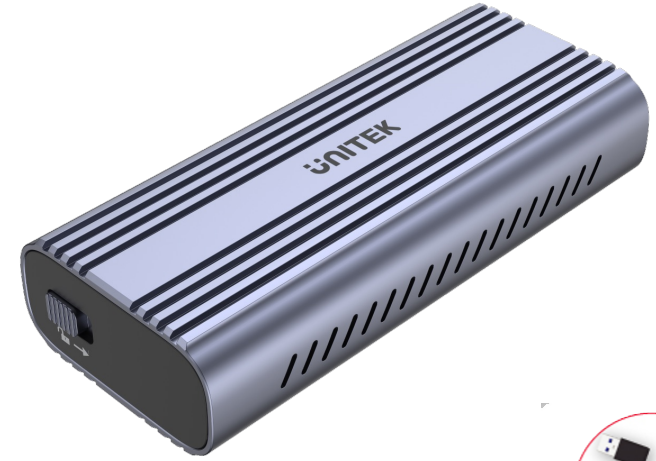


SolidForce Reefer Either

USB-C to M.2 SSD Enclosure Support SuperSpeed+ 10Gbps & UASP

- Model: S1225A
- Products Features:
 - USB3.2 Gen2 specification up to 10Gbps. Backward compatible.
 - Support for M.2 NVME & SATA SSD for M-Key and B+M-Key for size 2242/ 2260/ 2280
 - Hollowed design for superior heat dissipation.
 - With UASP for speed acceleration, and TRIM supported, helpful in boosting the efficiency of data transfer.
 - With Auto-Sleep Mode for energy-saving after 30 minutes idle.
 - Aluminium heat exchanger and silicone thermal pad are provided for heat dissipation.
 - With aluminium durable housing with fins of heatsink.
- Package Content
 - 1 x SolidForce Reefer Either
 - 1 x USB-C 10Gbps Data Cable with USB-A Adapter, 30cm
 - 1 x Aluminium Heat Exchanger
 - 2 x Silicone Thermal Pad
 - 1 x Mini Screwdriver
 - 2 x Screw Parts
 - 1 x User Manual



USB-C Data Cable
With USB-A Adapter

• Specification

Dimension	107mm x 46mm x 24mm
Color	Space Grey
Material	Aluminium-Alloy Housing
Cable Length	30cm
Upstream	USB-C
Downstream	PCIe/NVMe M.2 SSD or SATA/AHCI M.2 SSD (2242/ 2260/ 2280, M Key & B+M Key)