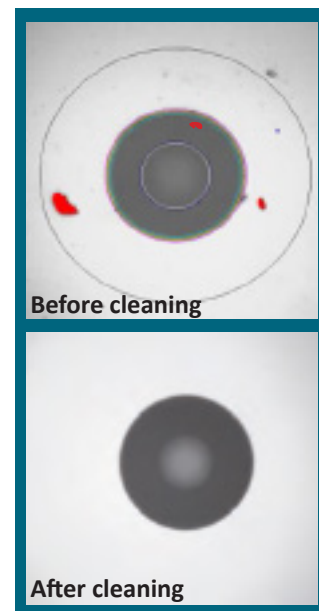


# Fiber Microscope



Connect Fiber Microscope to Softing Testers



WireXpert



NetXpert XG



FiberXpert

## Digital Fiber Microscope to inspect connector end faces

Over 90% of fiber optic cable performance issues are the result of dirty end faces.

Before testing fiber optic links and every time fiber optic connectors are mated, connector end faces should be inspected and evaluated to avoid contamination that can cause degradation of network performance and destructive damage in the contact zone. The new fiber microscope provides for a quick and easy inspection of connector end-faces and an automated "Pass/Fail" analysis compliant with IEC 61300-3-35.

The microscope is easily connected via USB to the WireXpert, NetXpert XG, and FiberXpert and the evaluation of connector end faces can be added to the test reports.

### Features

- Connector end-face evaluation at the touch of a button
- Automated analysis compliant with IEC 61300-3-35
- Ease of use and quick analysis
- Adapters for the most common fiber-optic connectors are included



Check out the optional Softing fiber cleaning kits



# Fiber Microscope

## NORTH AMERICA & CANADA

Softing Inc.  
Knoxville, Tennessee  
Phone: +1.865.251.5252  
E-mail: sales@softing.us

## ASIA/PACIFIC

**Singapore**  
Softing Singapore Pte. Ltd.  
Singapore  
Phone: +65-6569-6019  
E-mail: asia-sales.itnetworks@softing.com

## China

Softing Shanghai  
Shanghai  
Phone: +86-21-54133123  
E-mail: china-sales.itnetworks@softing.com

## EUROPE/MIDDLE EAST/AFRICA

### Germany

Softing IT Networks GmbH  
Haar, Munich  
Phone: +49 89 45 656 660  
E-mail: info.itnetworks@softing.com

### France

Softing SARL  
Créteil, Île-de-France  
Phone: +33145172805  
E-mail: info.france@softing.com

### Italy

Softing Italia Srl.  
Cesano Boscone, Milano  
Phone: +39 02 4505171  
E-mail: info@softingitalia.it

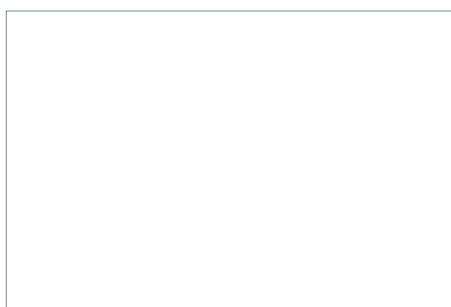
### Austria

Buxbaum Automation GmbH  
Eisenstadt  
Phone: +43 2682 7045 60  
E-mail: office@myautomation.at

For technical information and support please contact the Softing office in your country.

<https://itnetworks.softing.com/us>

For more information please contact:



©2021 Softing IT Networks. In line with our policy of continuous improvement and feature enhancement, product specifications are subject to change without notice. All rights reserved. Softing and the Softing Logo are trademarks or registered trademarks of Softing AG. All other trademarks, registered or unregistered, are sole property of their respective owners.

Physical Characteristics	
<b>Weight</b>	0.110 g (3.88oz)
<b>Dimensions</b>	(w × h × d) 140x46x44 mm (5,5x1,8.x1.7 in)
General specifications	
<b>General Technical</b>	(typical at 25°C)
<b>Low mag field-of-view (FOV)</b>	Horizontal: 740 μm Vertical: 550 μm
<b>High mag field-of-view (FOC)</b>	Horizontal: 370 μm Vertical: 275 μm
<b>Live image</b>	640 x 480 fps
<b>Connector</b>	USB 2.0 (backwards compatible to USB 1.1)
<b>Camera sensor</b>	2560 x 1920, 1/2.5-in CMOS
<b>Particle size detection</b>	<1 μm
<b>Light source</b>	Blue LED, 100,000+ hour life
<b>Accuracy</b>	±1 m ± 10 <sup>-5</sup> x distance ± sampling resolution (excluding group index uncertainties)
<b>Lighting technique</b>	Coaxial
<b>Power source</b>	USB Port

Product	Part Number	Item Description
<b>Digital Fiber Inspection Kit</b>	WX_FX_INSP_KIT	Digital microscope with USB connection to WX4500 and tips for SC/FC/LC/ U1211/U2511 connectors
<b>Adapter FC/PC tip</b>	WX_FX_INSP_FCPC	FC/PC tip for Digital Fiber inspection kit
<b>Adapter FC/APC</b>	WX_FX_INSP_FCAPC	FC/APC tip for Digital Fiber inspection kit
<b>Adapter LC/PC tip</b>	WX_FX_INSP_LCPC	LC/PC tip for Digital Fiber inspection kit
<b>Adapter LC/PC tip Long Reach</b>	WX_FX_INSP_LCPC_L	LC/PC tip for Digital Fiber inspection kit - Long Reach
<b>Adapter LC/APC tip Long Reach</b>	WX_FX_INSP_LCAPC_L	LC/APC tip for Digital Fiber in spection kit - Long Reach
<b>Adapter SC/PC tip</b>	WX_FX_INSP_SCPC	SC/PC tip for Digital Fiber inspection kit
<b>Adapter SC/APC tip</b>	WX_FX_INSP_SCAPC	SC/APC tip for Digital Fiber inspection kit
<b>Adapter ST tip</b>	WX_FX_INSP_ST	ST tip for Digital Fiber inspection kit
<b>Adapter 1.25mm Patchcd PC</b>	WX_FX_INSP_125PC	1.25mm Patchcord PC
<b>Adapter 1.25mm Patchcd APC</b>	WX_FX_INSP_125APC	1.25mm Patchcord APC
<b>Adapter 2.5mm Patchcd PC</b>	WX_FX_INSP_25PC	2.5mm Patchcord PC
<b>Adapter 2.5mm Patchcd APC</b>	WX_FX_INSP_25APC	2.5mm Patchcord APC