



Powered by  
EZVIZ AI

*EZVIZ DL20FVS Plus*

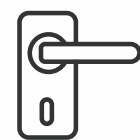
*Face Recognition & Palm Vein  
Handheld Smart Lock*

***Grasp and unlock the brilliance  
of AI, in a classic style***



Unlock the future of home security with the DL20FVS Plus, EZVIZ's first AI-powered smart lock that keeps the lever handle you already know and love. It sees you before you touch it, recognizing faces and palm veins to welcome family and friends while keeping intruders out. With the DL20FVS Plus, smart front door protection fits naturally into your life.

# Key Features



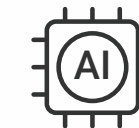
User-Friendly Lever  
Handle Design



Secure & Fast Facial  
Recognition with 3D  
In-Depth Sensing Technology



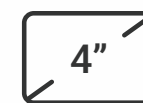
Palm Vein Recognition  
for Additional Touchless  
Convenience<sup>1</sup>



12 nm High Performance  
AI Chip & Dual-Core CPU



Remote Unlocking &  
Status Checking via  
the EZVIZ App



Built-in Door Viewer  
with 4-Inch Indoor  
Smart Screen



Live View with  
Two-Way Video Call



Wandering Detection  
with Real-Time Alerts



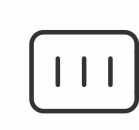
Fully Localized Data  
Processing & Storage with  
Your Privacy at First<sup>2</sup>



Safe Design Against  
Peeping & Forced Entry



Sturdy Lock Body with  
Anti-Tamper Alarm



Large-Capacity  
Rechargeable Lithium  
Battery

# Next-generation AI built for smart locks

Only very few companies in the lock market develops and owns AI technologies, and fewer can bridge them with useful, user-friendly products through extensive real-life testing. EZVIZ is one of them.

## **Algorithm** that leads

### **EZVIZ AI 3D modeling & recognition 3.0**

that optimizes speed, accuracy, and adaptability

## **Security** that endures

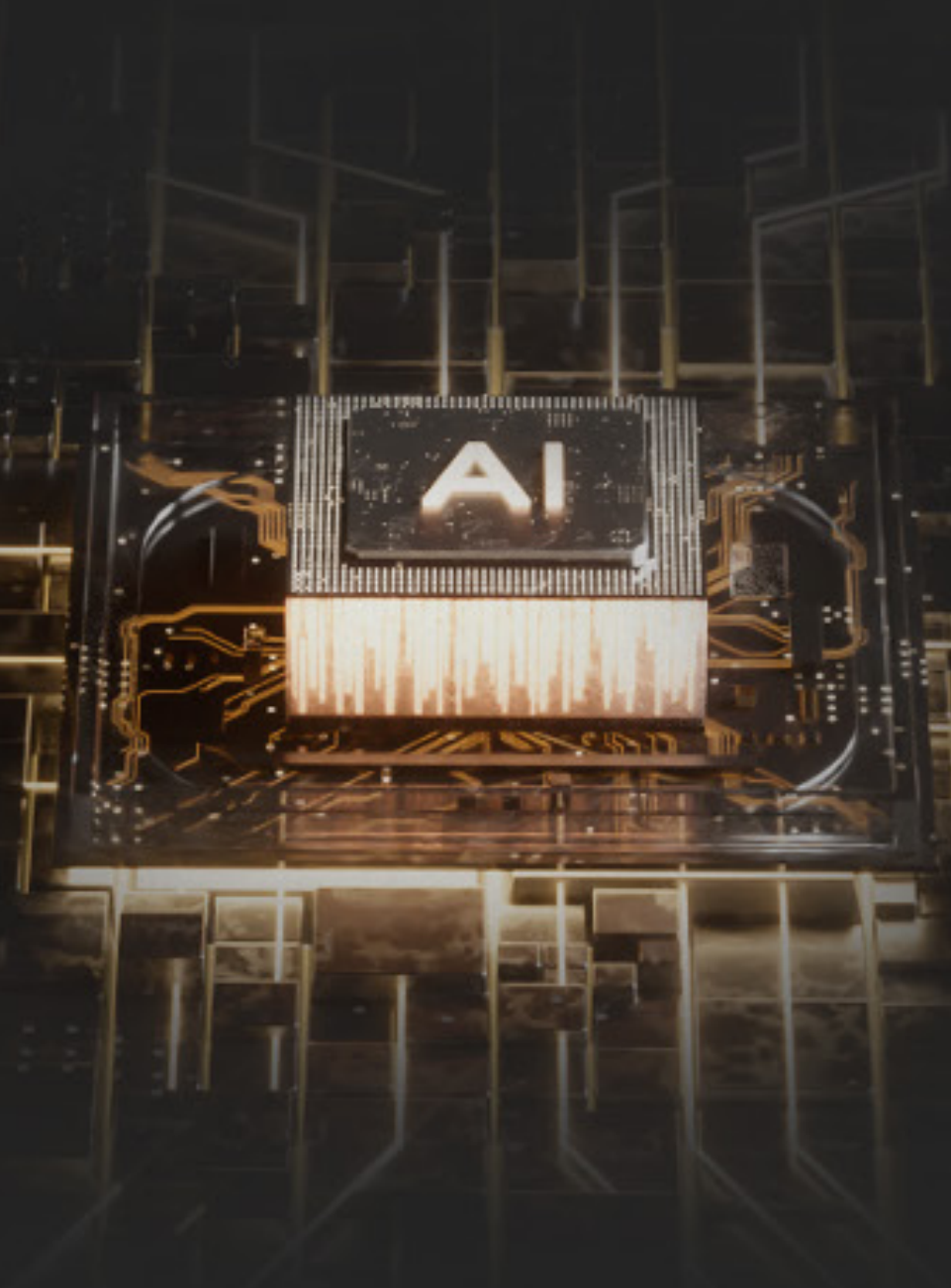
Strict data protection and end-to-end encryption, with **fully localized processing of facial recognition data**

## **Hardware** that excels

**Built-in 12 nm high performance AI chip** and **dual-core CPU** design that drive unmatched high performance

## **Intelligence** that enhances

Supports **over-the-air software updates** to your smart lock over time with longer product life cycle



# State-of-the-art AI for convenience & security



**$\leq 1$  second** unlocking time<sup>3</sup>

for instant response & ultra-smooth experience

**$\leq 0.0001\%$  false acceptance rate<sup>4</sup>**

to ensure extremely high level of security while being fast in recognition

**$\leq 0.1\%$  false rejection rate<sup>5</sup>**

to greatly reduce frustration caused by repetitive verification

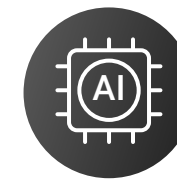


# Your face unlocks the door, your hand brings you home

Coming home has never been easier. Just let the DL20FVS Plus recognize your face, press the handle like you normally would, and walk in. Then the door locks itself automatically behind you. Designed to make life safer and simpler, all your families now enjoy the benefits of AI-powered security without changing the way they move through their day.



User-Friendly  
Lever Handle



Industry-Leading  
AI Technology



Family-Ready  
Convenience



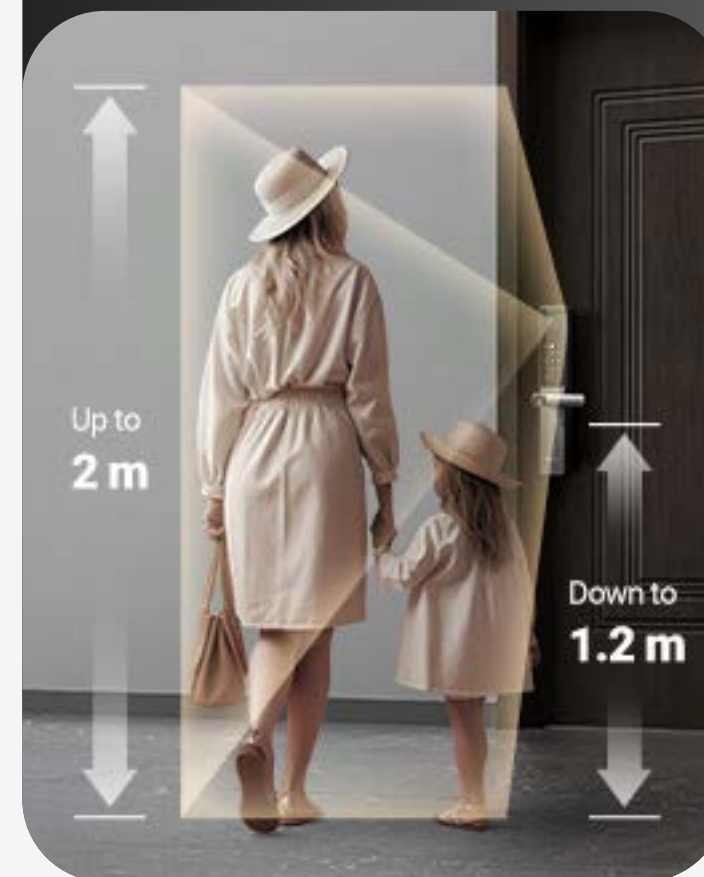


# The door that sees you, and opens only for you

## Your home welcomes you at the first sight

Carrying groceries, holding your little one, or rushing through your day, opening the door shouldn't slow you down. The DL20FVS Plus is ready the moment you approach, recognizing you no matter your accessories, hairstyle, or anything else.

*Step one*



*Step two*



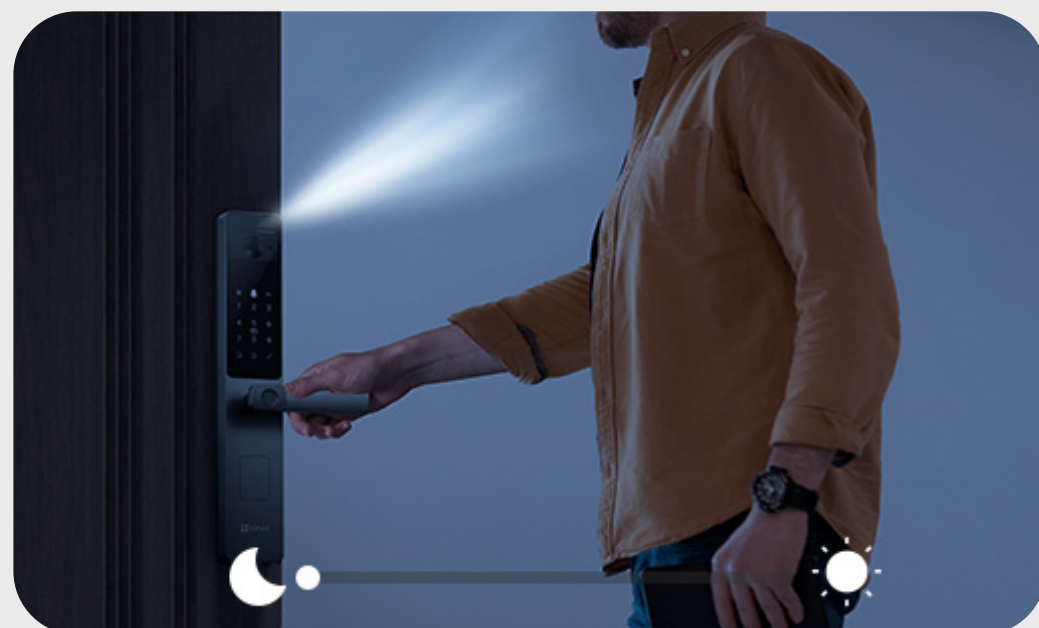
Despite hairstyle & makeup



Sees through glasses & beards







✓  
**Dim hallway**



✓  
**Bright Daytime**

## Your home welcomes no matter the moment you arrive

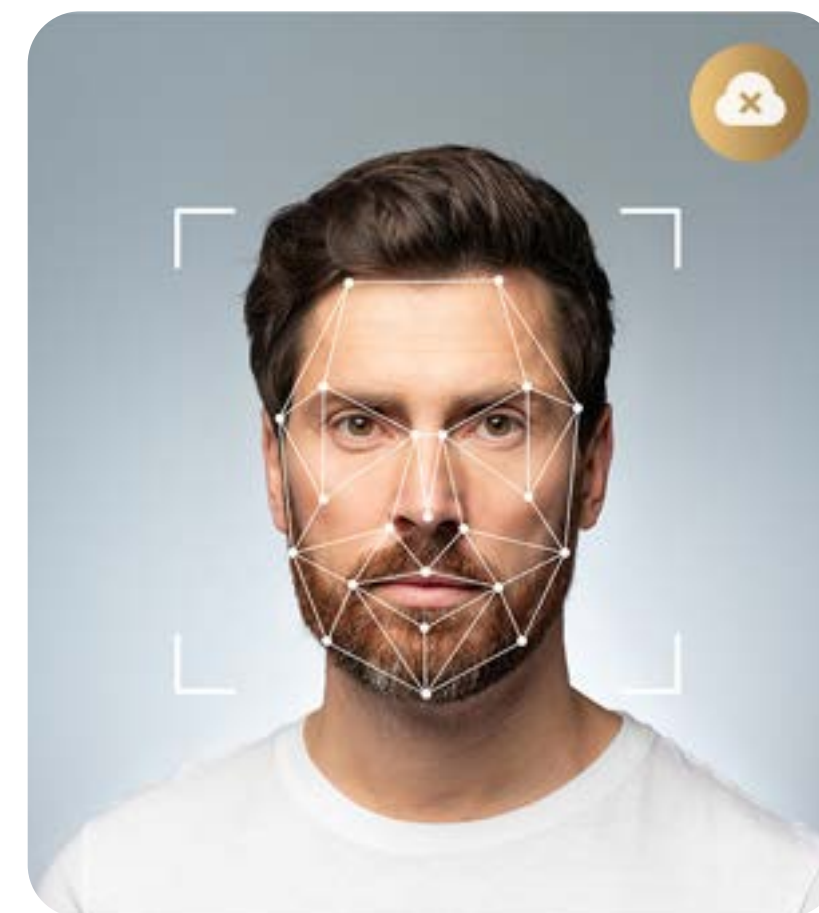
Whether it's the bright glare of morning sun or the soft glow of evening, the DL20FVS Plus recognizes you instantly and unlocks in seconds. What's better, you don't have to fumble or search in the dark. Your hand naturally finds the handle.

## Tirelessly protects, with security at its core

Security is the cornerstone of a good lock. We build the DL20FVS Plus with multiple technologies to ensure that both your home and your data are well protected.



✗  
**Can't be fooled by photos, videos, 3D masks or statues**



✓  
**Localized 3D data processing without real-life user photos stored or transmitted**

# Palm vein as the key, one hand solves all

In addition to the unique and secure 3D facial recognition, your palm can also be the key. Simply place your hand in front of the lock and press the handle, then you can enter the house instantly and confidently.



**Less constraints  
from face coverings**



**Less restriction  
on users' height**



**Less worries  
on worn fingerprints**





# Natural unlocking methods without changing your habits

Experience an intuitive and smooth unlocking process, tailored to fit your usual habits and routines. All you need to do is to select your preferred method of unlocking, and with a gentle push on the handle, you can access your home efficiently and confidently.

***Whatever way you unlock it, just use the handle and the door opens***



3D Facial Unlock



Palm Vein Unlock



Passcodes



Fingerprints



# More ways to enter for tailored convenience

Your household can be busy with comes and goes, and you may not always be there to welcome the ones you trust. Choose what's convenient for your family and visitors, while keeping your front door under your watch.

## *For regular visitors*



Fingerprints



Bluetooth Keys



Passcodes

### Visiting Relatives



### Close Friends



### Long-Term Nannies



### Pet Walkers



## *For services & deliveries*



Temporary  
Visitor Codes



App Remote  
Unlock

### Airbnb Guests or Short-Term Renters



### Scheduled Housekeepers



### Service Technicians



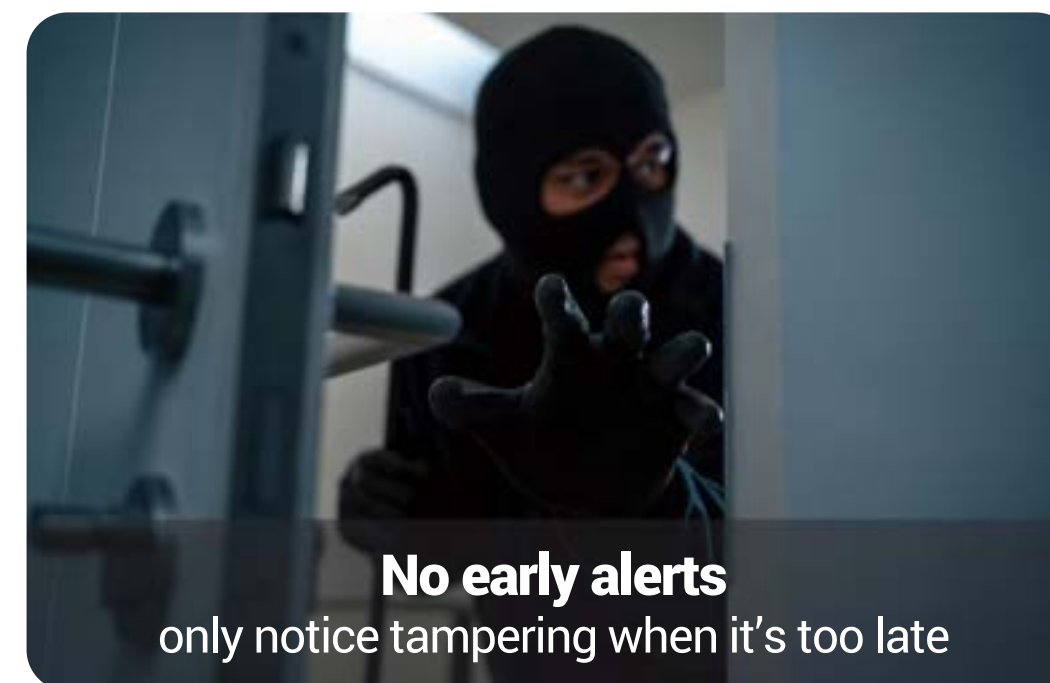
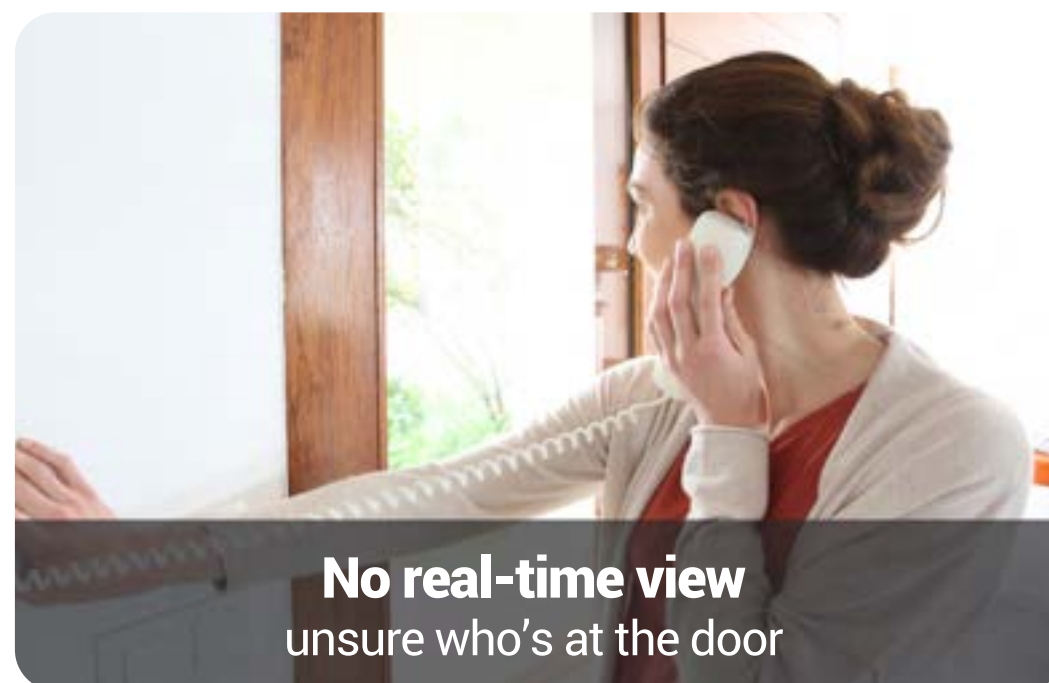
### Package or Grocery Delivery





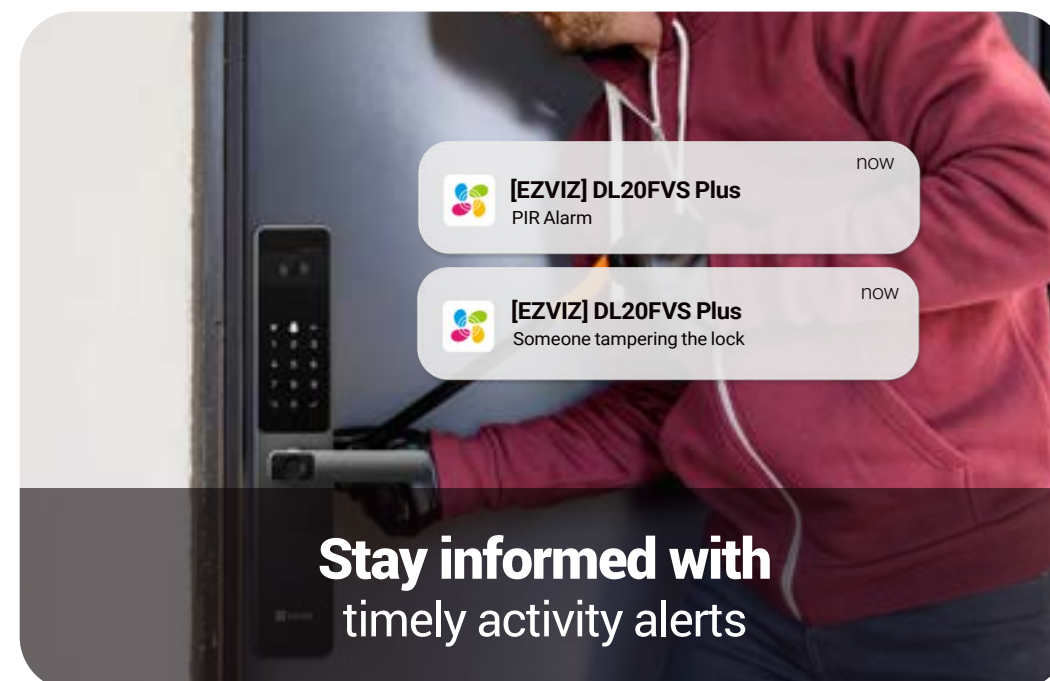
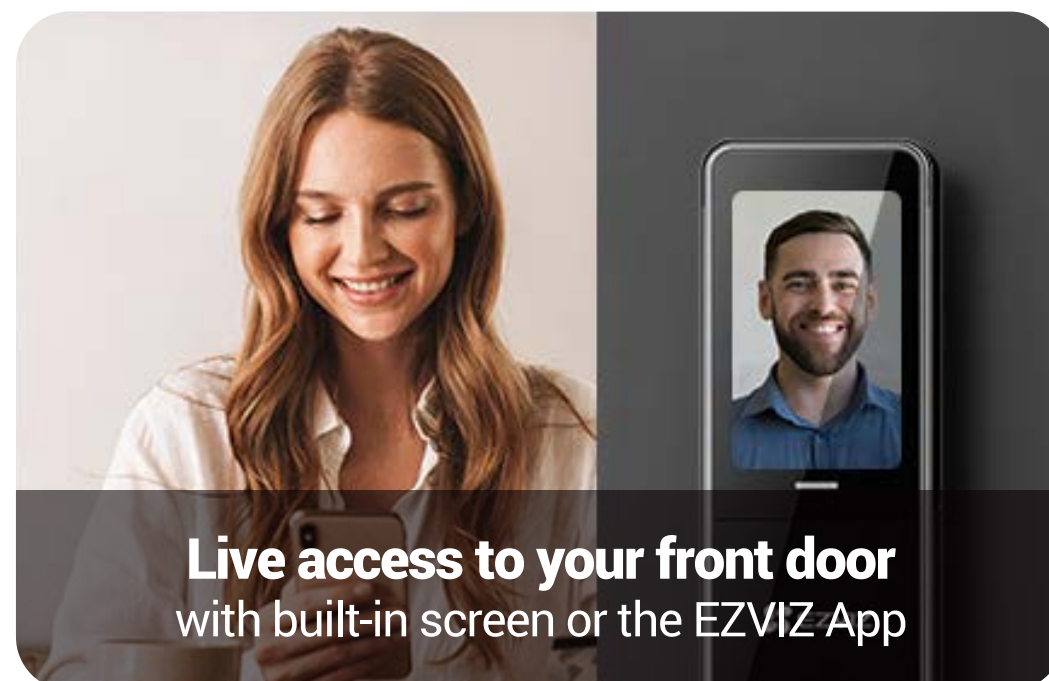
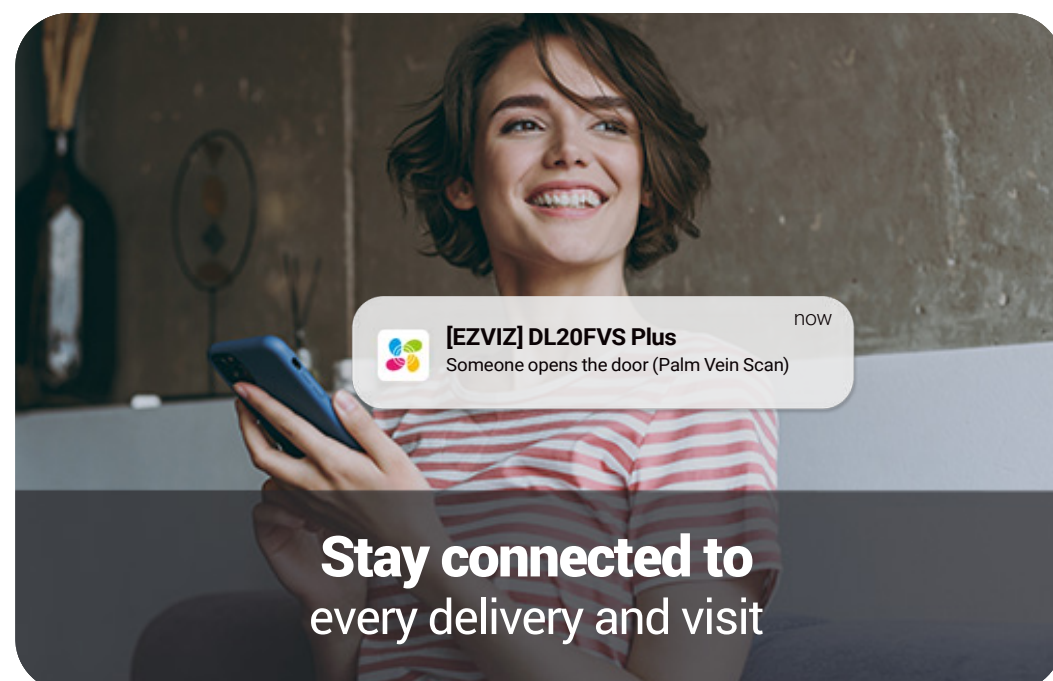
# Why you want your lock to be more than a lock

Users expect more from a smart lock because they struggle with some difficult times, which requires flexibility, security, and convenience beyond just opening a door.



## One multi-purpose product offers total peace of mind

*Here's what DL20FVS Plus offers*



# Much better than your old peephole

## See more with a wide-angle view

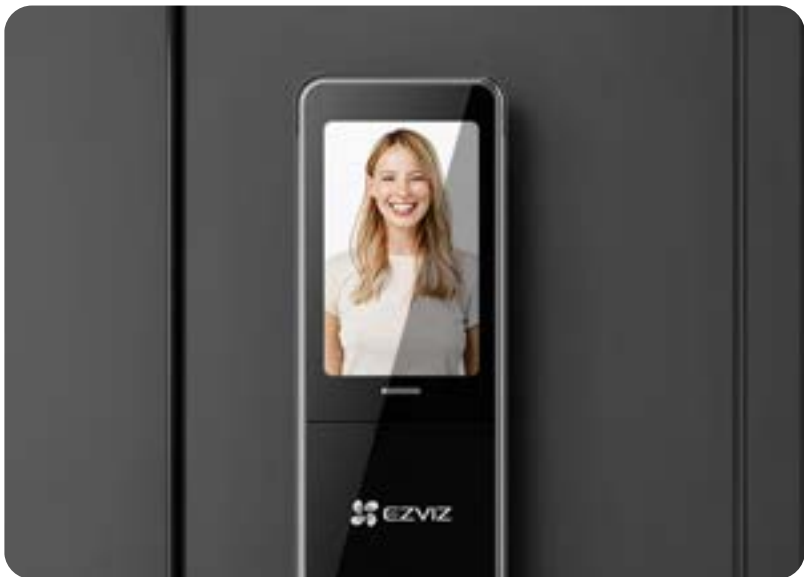
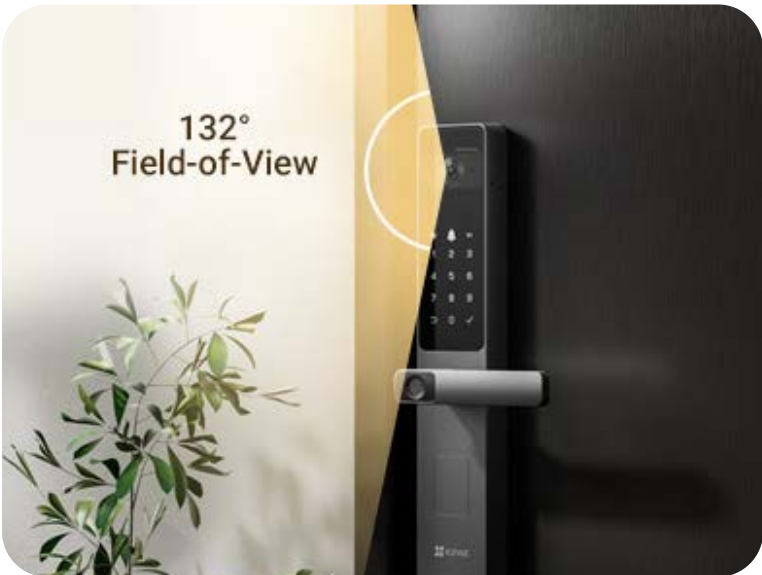
The smart lock features a built-in camera that delivers a clear, wide-angle view of your doorstep.



Ultra-Wide 132°  
Field-of-View



Two-Way Talk  
with Voice Changer



## Check visitors with the indoor screen

The indoor screen helps everyone, from kids to grandparents, see who's at the door before unlocking, with no smartphone needed.



Crisp Video Clarity



4-Inch Color Screen

# Active and smart as a security guard

Thanks to EZVIZ's smart visual technology, your lock knows when someone's near, or hanging around. It detects human movement by your door and sends instant alerts, keeping you in the know, day and night.



5.8 G Radar  
Human Presence  
Sensor<sup>6</sup>



IR Night  
Vision  
(up to 2 m)

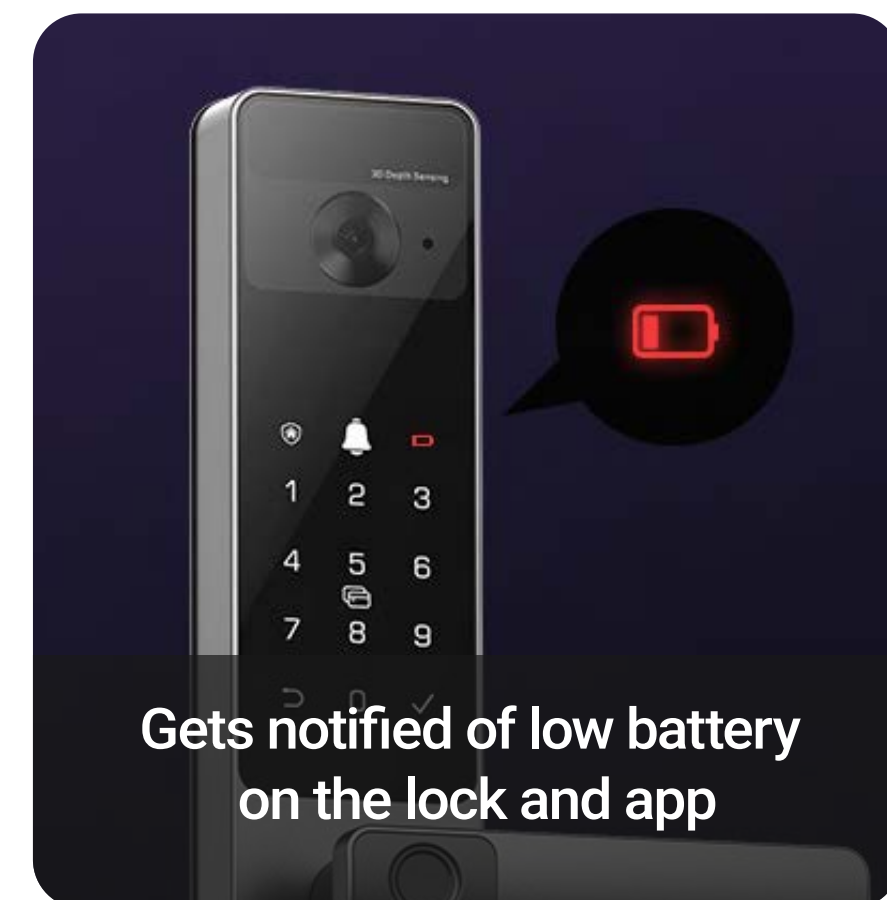
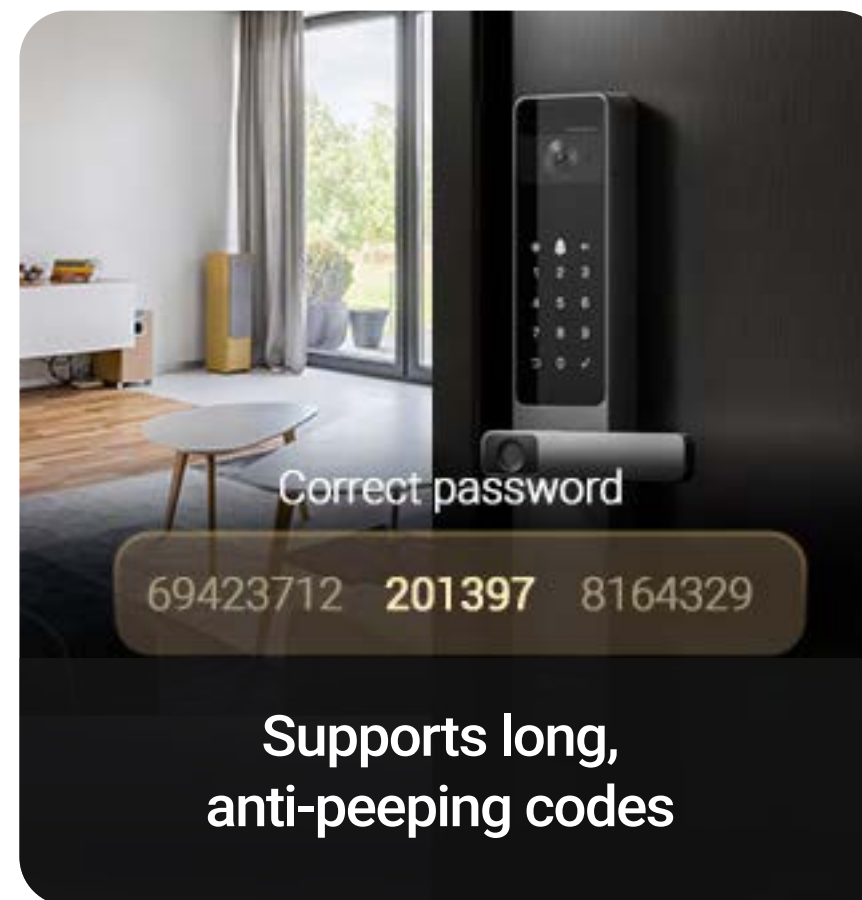
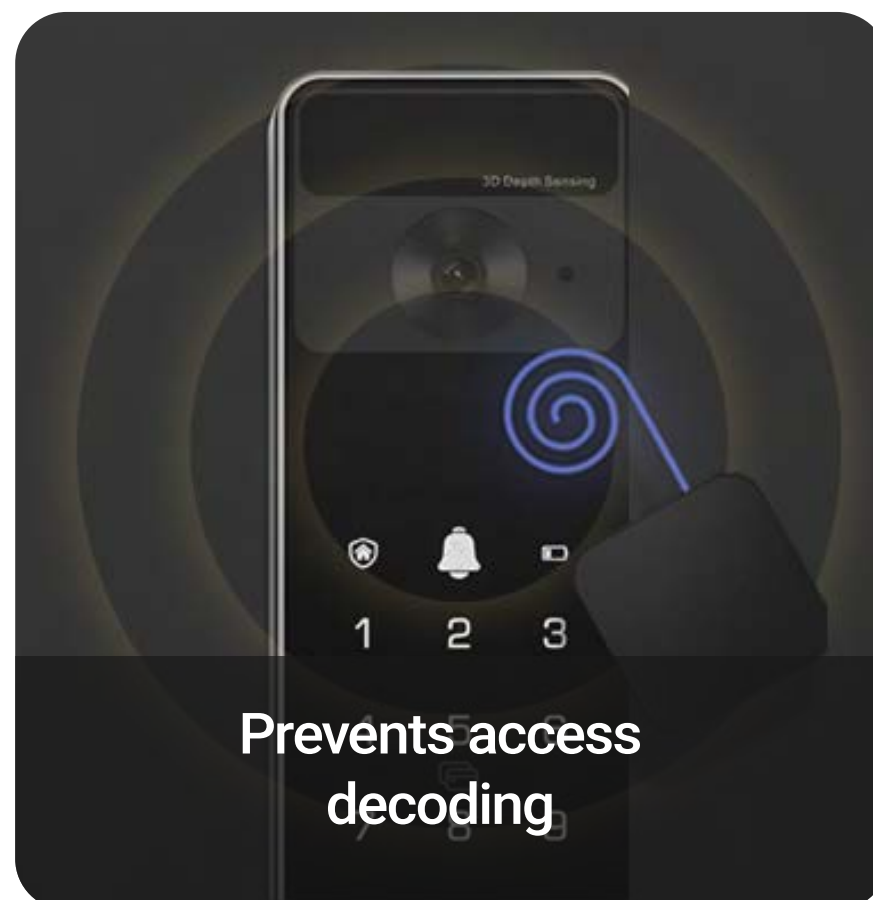
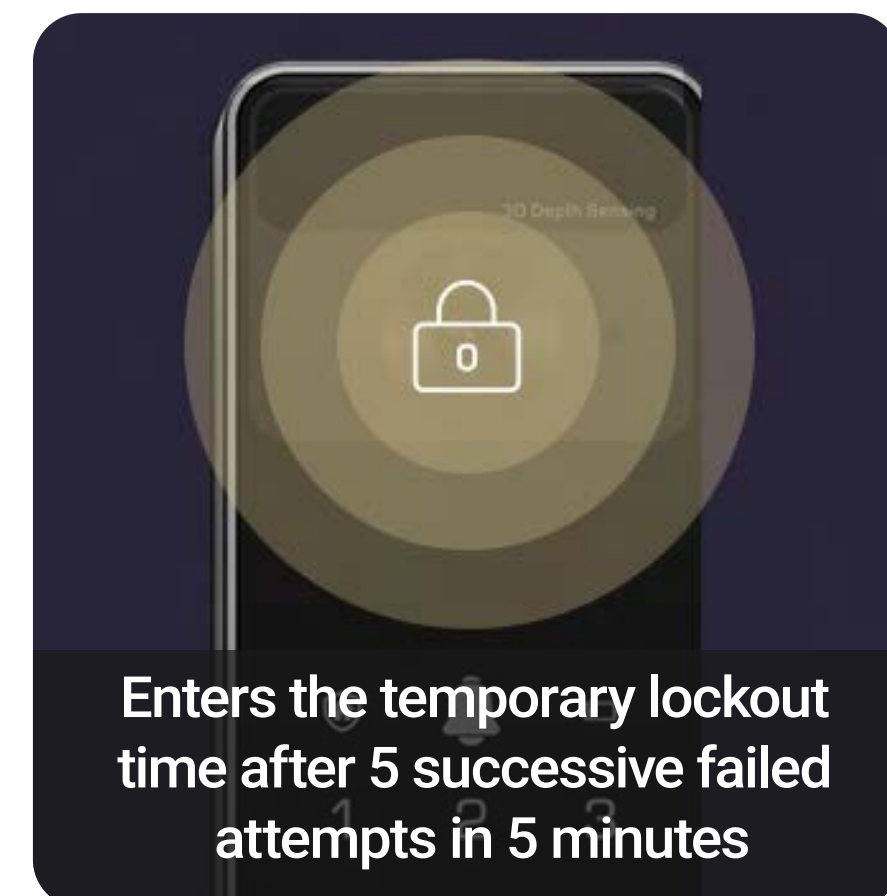
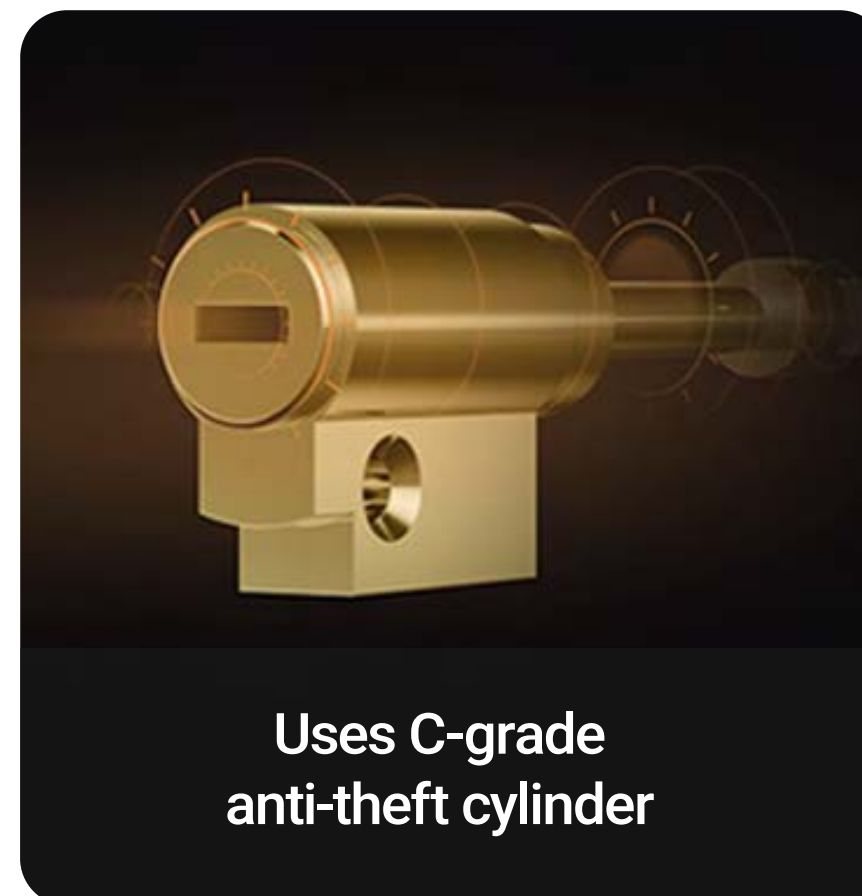


Detection Video  
Replay (Built-in  
8 GB memory)





## Security you can trust in every part



# Extra peace of mind, all at your fingertips

*Instant notifications on attempted unlocking*



**[EZVIZ] DL20FVS Plus**

Someone opens the door (Palm Vein Scan)

now

*Real-time detection alerts on people who linger*



**[EZVIZ] DL20FVS Plus**

PIR Alarm

now

*Low-battery warning*



**[EZVIZ] DL20FVS Plus**

Low Battery Alarm

now

*Anti-tamper alarm*



**[EZVIZ] DL20FVS Plus**

Tamper Alarm

now

**Lock status & activity log check**

\* For illustration purposes only.



## Stand strong and protect always

Designed to endure real-world conditions, the smart lock passes rigorous testing for weather resistance, long-term use, and electrical safety, delivering reliable protection you can count on.



**96 Hours**

Neutral Salt Spray Test

**15 KV**

Air Electrostatic Discharge Test

**100,000 Times**

Full Device Life Cycle Test

**-10°C ~ 55°C**

High and Low Temperature Test

## Beauty that secures, elegance that lasts

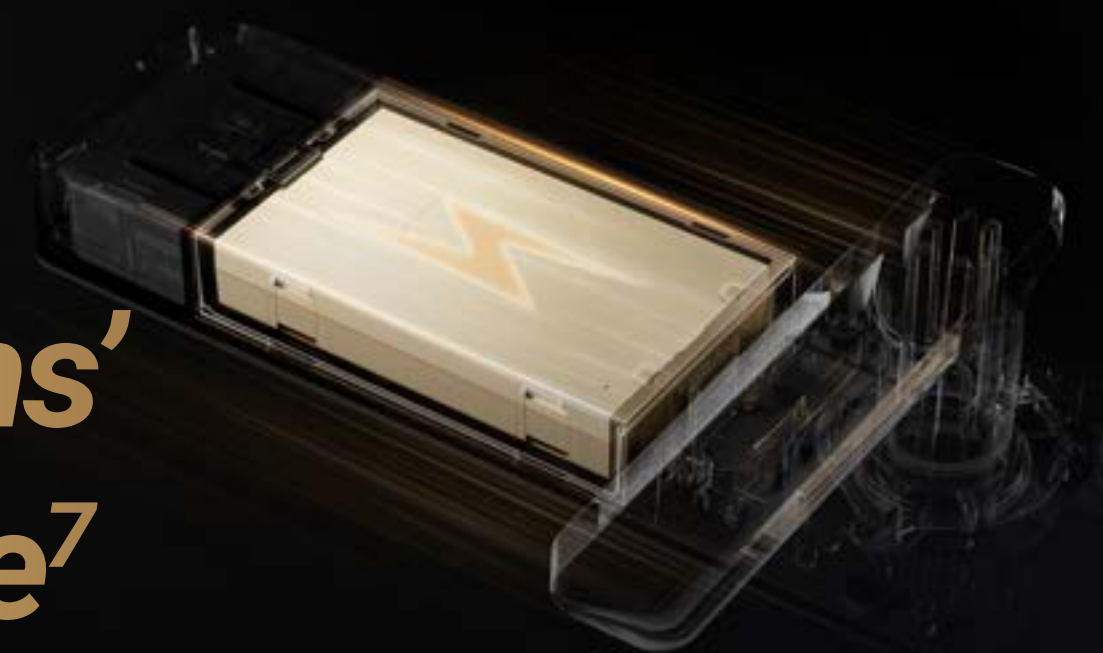
Designed with classic and elegant lever handles, the DL20FVS Plus blends seamlessly into your front door, regardless of materials and colors. It adds a touch of sophistication and smartness to your entrance, making a welcoming impression on every visitor.



## Reliable protection that stands the test of time

Designed for durability, the lock delivers up to 4 to 5 months of reliable performance on a single charge with a 5,000 mAh rechargeable battery. Even when the battery level is low, it can be easily reactivated by connecting to a power bank or a nearby power source.

**4~5 Months'  
Battery Life<sup>7</sup>**





# We're committed to protecting with trust

We put security as the primary goal of every product and system that we build, and assiduously improve our practices to better protect your device, data and privacy.

[Learn more about our security practices >](#)

Local Storage



**End-to-end  
Data Encryption**

**AES**  
Data Encryption

**TLS**  
Data Transmission  
Encryption

Our global certifications in the fields of **information security, privacy information security, and cloud security**



- 1 Please note that the palm vein scanning area does not include fingers. When using the palm vein unlocking function, please place only the palm part on the scanner. The optimal palm vein scanning distance ranges from 15 cm to 25 cm for adults, with a recommended distance of 10 cm for children. These distances may vary depending on environmental conditions, such as strong sunlight.
- 2 The biometric recognition technology in DL20FVS Plus operates ENTIRELY LOCALLY on the product that you control and manage yourself, and only serves the sole purpose of supporting your decision of unlocking. During the whole course, the saved data always only contains technical value, i.e. the biometric data obtained from the templates you proactively provided in advance (such as facial images, palm vein templates), which cannot be used to reconstruct your original data.
- 3 Data from EZVIZ Lab's testing results based on standard conditions. The actual recognition speed may vary due to environmental factors.
- 4 Data from EZVIZ Lab's testing results based on standard conditions. The actual false acceptance rate may vary due to various objective factors, such as heavy makeup or strong sunlight exposure.
- 5 Data from EZVIZ Lab's testing results based on standard conditions. The actual false rejection rate may vary due to various objective factors, such as heavy makeup or strong sunlight exposure.
- 6 The human presence sensing feature uses the built-in radar sensor and does not involve the detection of human faces. You can choose to activate or deactivate this function on the EZVIZ App.
- 7 When being connected via Bluetooth with the Wi-Fi mode disabled, the lock can run up to 4-5 months with fully charged batteries based on the usage of 10 openings per day. When the lock is connected via Wi-Fi, its battery life may reduce due to internet activities, and the actual use may vary due to the network stability or other environmental factors.



# Specifications

CS-DL20FVS Plus

## Material and Specification

Panel Material	Aluminum alloy
Panel Size	Front panel: 391.4 × 72.4 × 28.2 mm Rear panel: 391.4 × 72.4 × 30 mm
Color	Metallic grey
Lock Body Type	Automatic mechanical detection lock body 6068
Lock Cylinder	C-level cylinder
Emergency Charging	Type-C
Working Power	5000mAh rechargeable Lithium batteries

## Technical Specification

Unlocking Method	Face ID, Palm Vein, Fingerprint, Passcode, Mechanical key, Bluetooth Key via EZVIZ App, Temporary codes, Remote unlock
User Capacity	50 pcs
Face ID	50 pcs
Palm Vein	50 pcs
Fingerprint Capacity	50 sets
Passcode Capacity	50 pcs
Communication Methods	2.4GHz Wi-Fi, Bluetooth
Screen (not touch)	IPS 4-inch (480 × 800)
IP Grade	IP52
Front Panel Camera Resolution	1080 × 1960
Front Panel Camera Lens	View angle: 70° (horizontal), 126° (vertical), 150°(diagonal)


IR Night Vision Distance	2 m
Storage	EMMC 8G, supports EZVIZ Cloud
Face Recognition	Standing distance< 1 m, Height greater than 1.2 m and less than 2 m Recognition speed ≤ 1 s, supports day / night recognition, supports changing hairstyle and wearing glasses recognition * EZVIZ laboratory data
Palm Vein Recognition	The palm is facing the sensor at a distance of 15~25 cm, and the palm can be recognized * EZVIZ laboratory data
Software Function	Anti-peeping code / Low battery warning / Privacy mode / User management / Real time notification / Anti-test locking / Anti-tamper alarm / Remote control / Video calling / Change voice / Wandering detection
Voice Control	Supports (Google assistant / Alexa (OTA))
Supported Door Thickness	6068: 40-120 mm
Working Temperature	-10°C~55°C
Operating Humidity	10%~95%

## In the box

- Front Panel
- Rear Panel
- Hole Template
- Lock Body
- Lock Body Screw Bag
- Standard Screw Bag
- Handing Screw Bag
- Battery
- Battery Slot Cover
- Key Bag
- Square Rod
- Bumper Pad
- Sticker
- Regulatory Information
- Quick Start Guide × 2

## Certifications

CE (EMC / LVD / RED / ROHS) / REACH / SVHC / WEEE

Specifications are subject to change without notice. " , "EZVIZ" and other trademarks and logos are the properties of EZVIZ in various jurisdictions.