

CS-BC1c-R100-2F8WFL

Smart Home Battery Camera

Introduction



With 4K UHD and two integrated spotlights, you'll see the small details of any person that work onto your property at day or night. With EZVIZ 7/24 Always-on protection, BC1c 4K being a battery camera can also guard your property 7/24 like wired camera.

Main Features



4K Resolution



10,400 mAh Rechargeable
Lithium Battery



24/7 Always-on Protec-
tion



Color Night Vision



High Fidelity Two-Way Talk



Smart Human Motion/
Vehicle/Animal Detection



Active Defense



Weatherproof Design
(IP65)



Work with EZVIZ Solar
Panel Series to Convert
Green Power



Support Bluetooth



Support WiFi 6

H.265

H.265 Video Compression



Support MicroSD Card up
to 512GB

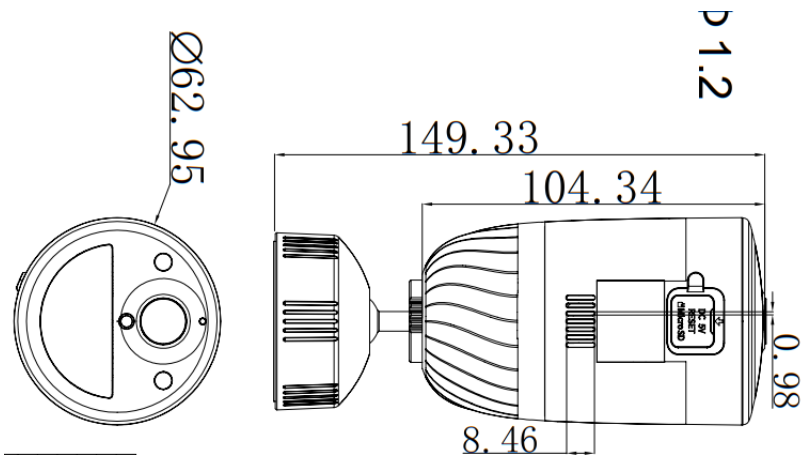


Work with Google & Alexa



2.4GHz Wi-Fi

Dimension



Specifications

Model	CS-BC1c-R100-2F8WFL
Camera	
Image sensor	1/2.7" 8-Megapixel Progressive Scan CMOS Sensor
Minimum Illumination	0.01 Lux @(F1.6, AGC ON), 0 Lux with IR
Shutter Speed	Self-adaptive shutter
Lens	2.8mm@ F1.6 Diagonal angle: 135° Horizontal angle: 113° Vertical angle: 60°
Day & Night	IR-cut filter with auto switch
DNR	3D DNR
Night Vision	IR Distance:15m, Color Night Vision Distance:15m
Video & Audio	
Max Resolution	3840*2160/4K/8MP
Frame Rate	15fps. Self-Adaptive during network transmission
Video Compression	H.265/H.264
Video Bit Rate	Ultra-HD; Full HD; Hi-Def Adaptive bit rate.
Audio Bit Rate	Self-Adaptive
Max. Bitrate	4 Mbps
Network	
Bluetooth	Supports
Wi-Fi Standard	IEEE802.11b, 802.11g, 802.11n, 802.11ax
Frequency Range	2.4 GHz ~ 2.4835 GHz
Channel Bandwidth	Support 20MHz
Security	WPA-PSK/WPA2-PSK, WPA3-Personal
Transmission Rate	11b: 11Mbps, 11g :54Mbps, 11n :72Mbps, 11ax:114Mbps
Wi-Fi Pairing	AP pairing
Protocol	EZVIZ cloud proprietary protocol
Interface Protocol	EZVIZ cloud proprietary protocol
Minimum Network Requirement	8 Mbps
Function	
Smart Alarm	AI Human Detection, Vehicle Detection, Animal Detection (Beta)
Two-way Talk	Supports
General Function	Anti-Flicker, Heart Beat, Password Protection, Watermark
Storage	
Local Storage	Support Micro SD slot for local storage (Up to 512G)
Cloud Storage	EZVIZ cloud storage
General	
Operating Conditions	-20°C to 50°C (-4°F to 122 °F), Humidity 95% or less (non-condensing)
IP Grade	IP65
Power Supply	DC 5V/2A (Compatible power adapter needs to be purchased separately)
Battery Capacity	10400 mAh
Power Consumption	Max.10W
Product Dimensions	149.33mm x 62.95mm x 62.95mm
Packaging Dimensions	103x103x186mm
Weight	Net Weight: 336.5g With Package: TBD



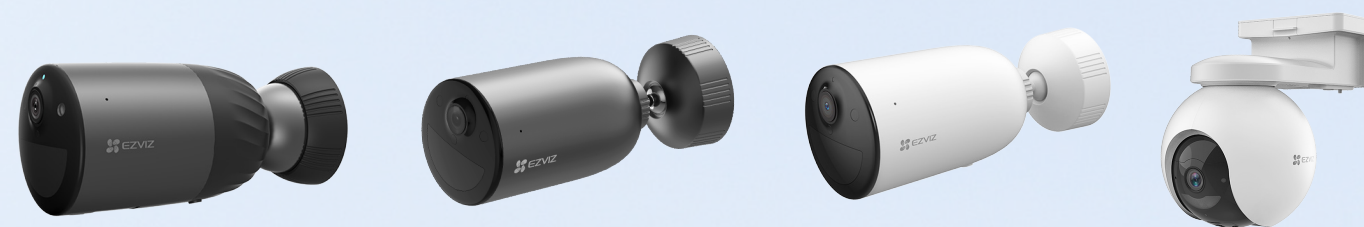
Solar Panel with Battery Storage

24W

**Effectively transforms,
stores and uses the
power of the sun**



*Designed to Charge All EZVIZ
Outdoor Battery Cameras*



Key Features

- **Large Built-in Battery Capacity:** As a 75Wh power bank that converts solar energy to charge security cameras, it removes your battery anxiety even if you live in a cloudy region.
- **Double Charging Ports:** It powers two battery cameras at the same time to ensure all-around protection.
- **High-performance Monocrystalline Silicon:** The solar panel uses monocrystalline silicon solar cells to charge your battery cameras at a high efficiency conversion rate of up to 23%¹.
- **Battery Status Monitoring:** When connected to EZVIZ battery cameras² that support Bluetooth communication, the certified solar panel ensures correct power management via EZVIZ App.
- **Weatherproof Design:** Featuring a durable frame and stainless steel screws, the solar panel easily withstands rain, dust, snow and sun.
- **Made to Support Versatile Protection:** When working with EZVIZ battery cameras, it's helpful to reduce limits and reduce human labor in large gardens, farms, camping areas, construction sites, etc.

24/7 protection powered by green energy

The solar panel can be a great helper to simplify your use of an EZVIZ outdoor battery camera, as it provides round-the-clock green power to free you from recharging your device. Unlike your ordinary solar panel that stops working on a cloudy day, it stores up to 75Wh power onboard to keep your camera running longer.



Conversion Efficiency

23%

Charging Power

24W

Expected Performance

when powering the EB8 Battery Camera

Total Battery Capacity

75Wh+38Wh

On Solar Panel On EB8 Camera

Total Charging Time³

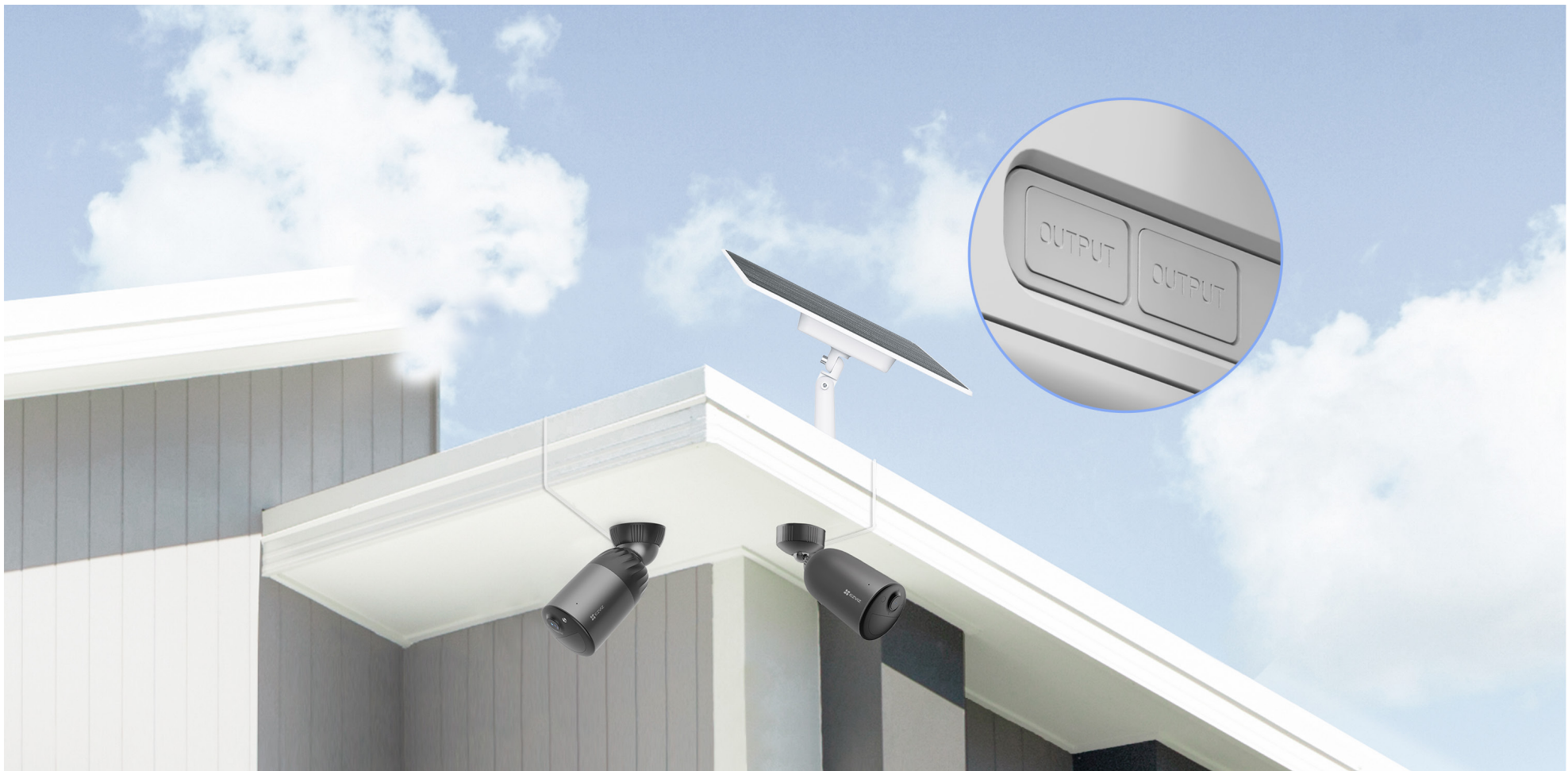
4.7h

Estimated Camera Use⁴

60 hours

Dual charging power, double home protection

The solar panel can be connected to two battery-powered cameras and charge them simultaneously. Mount your security camera where you need it, then find a sunny spot to install the solar panel with the included 3-meter-long cables.



Easy and flexible to install

The adjustable and versatile mounting bracket ensures flexibility in choosing the best location to optimize sun exposure.



Pivotal accessory for the great outdoor

A perfect companion for the EZVIZ battery cameras that take care of larger areas, the solar panel helps greatly reduce human labor and energy bill.



- 1 Actual charging efficiency may be slightly higher or lower depending on sunlight intensity and other environmental factors.
- 2 Currently only following models support Bluetooth communication: EB3-R200, BC1c-R100, CB5-R100, EB5-R100. The list may grow as EZVIZ launches more products in the future. Please check the compatibility before purchasing.
- 3 The data is calculated when the Solar Panel charges both an EB8 Outdoor Pan & Tilt Battery Camera and itself from zero battery to full battery status, under the condition that no power-consuming camera activities (including detection, video recording, pan and tilt actions, etc.) happen during the charging period. The data collecting process is under STC (Standard Tested Condition): AM=1.5, 25°C, 1000W/m², SMQ.
- 4 The data is calculated when the Solar Panel has fully charged its onboard battery, and powers a fully-charged EB8 Outdoor Pan & Tilt Battery Camera under the condition that the EB8 is set on the always-recording mode. For different camera usage or other battery camera models, the estimate hours of power use may vary.

Specifications

CS-PBC24-R100-20AH

Performance Parameter

Open Circuit Voltage	18.4V (-5%, +10%)
Short Circuit Current	1.65A (-5%, +10%)
Power Voltage	15.3V (-5%, +10%)
Max Power Current	1.57A (-5%, +10%)
Max. Power	24W
Battery Capacity	75Wh (14.6V 5000mAh) rechargeable battery, battery life varies based on settings, usage & temperature
Interface	One Type-C input port, two USB-A output ports
Transformation Efficiency	23%
IP Grade	IP65

General

Operation Temperature	-20°C ~ 60°C (-4°F ~ 140°F), humidity 90% or less (non-condensing) (The working environment temperature range for battery camera charging should be maintained at 0-45°C)
Power Supply	DC 5V/2A
Material	High efficiency monocrystalline silicon cell
Product Dimensions	220.6 × 300 × 440 mm (8.69 × 11.81 × 17.32 inch)
Packaging Dimensions	480 × 115 × 340 mm (18.90 × 4.53 × 13.38 inch)
Weight	Net weight: 2.1 kg (74.07 oz) With package: 3.06 kg (107.94 oz)

In the box

- Solar Panel with Battery Storage
- Adjustable Mounting Bracket
- Hex Socket Head Cap Screw
- Drill Template
- Type-C to Micro USB Transformer (×2)
- Mount Bracket (×2)
- Power Cable (×2)
- L-Shaped Wrench
- Screw Kit
- Regulatory Information (×2)
- Quick Start Guide

Certifications

CE / REACH / WEEE / RoHS

Specifications are subject to change without notice. "🌈", "EZVIZ" and other trademarks and logos are the properties of EZVIZ in various jurisdictions.