

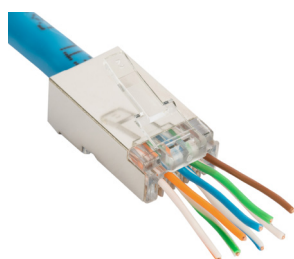
RJ45 PASS-THROUGH MODULAR PLUG CONNECTORS

DESCRIPTION

Our DYNAMIX RJ45 Pass-through modular plug connectors are designed to simplify the process of terminating RJ45 modular plugs, by allowing the wires to be inserted through the connector and out the front to easily verify the proper wiring order. Pulling the connector down over the cable jacket and seating it tightly in the rear of the connector this optimizes the performance of the termination.

FEATURES

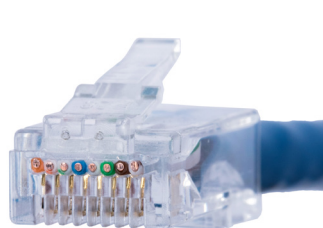
- Wire conductor up to 23AWG
- Gold plated 50 micron rated connectors
- Supports solid and stranded cables
- Transparent polycarbonate
- Meets or exceeds ANSI/TIA568-D.2; ISO/IEC 11801 Class D; ANSI/TIA 1096-A; IEC 60603-7
- Designed to be terminated with the DYNAMIX push-through crimp & cut tools
- Compatible with "Platinum Tools" crimp & cut tools

FLUKE *device Tested* 

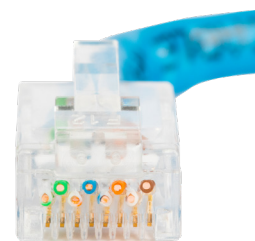
RJ-45PTC6S-20



RJ-45PTC6AS-x



RJ-45PTC6-x



RJ-45PTC6A-x



PTC-CP



PTC-HD



PRODUCT CODE	DESCRIPTION	QTY	CABLE JACKET	CONDUCTOR
RJ-45PTC6-20	CAT6 UTP Push Through Plug	20	Up to 7.0mm	1.05mm
RJ-45PTC6-100	CAT6 UTP Push Through Plug	100	Up to 7.0mm	1.05mm
RJ-45PTC6A-20	CAT6A UTP Push Through Plug	20	Up to 7.3mm	1.15mm
RJ-45PTC6A-100	CAT6A UTP Push Through Plug	100	Up to 7.3mm	1.15mm
RJ-45PTC6A-100JR	CAT6A UTP Push Through Plug Jar	100	Up to 7.3mm	1.15mm
RJ-45PTC6S-20	CAT6 STP Internal Ground Push Through Plug	20	Up to 7.0mm	1.15mm
RJ-45PTC6AS-20	CAT6A STP Internal Ground Push Through Plug. 2 Piece with Insert	20	Up to 8.0mm	1.35mm
RJ-45PTC6AS-50J	CAT6A STP Internal Ground Push Through Plug. 2 Piece with Insert	50	Up to 8.0mm	1.35mm
PTC-CP	Lightweight Push Through Crimper			
PTC-HD	Heavy-Duty Push Through Crimper			

SPECIFICATIONS

Wire Conductor	23AWG
Flame Auto-extinguish	UL94V-2
Shielded Material	Hard Brass (CAT6/6A STP Plugs Only)
Plug Material	Transparent Polycarbonate
Insertion Life	2000 Minimum cycles
Certification	ANSI/TIA568-D.2; ISO/IEC 11801 Class D; ANSI/TIA 1096-A; IEC 60603-7

RJ-45PTC6-x
CAT6 UTP Push Through Plug



FLUKE device Tested ✓

RJ-45PTC6A-x
CAT6A UTP Push Through Plug



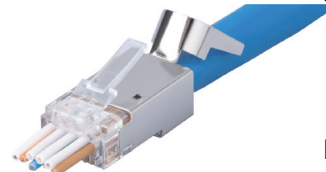
FLUKE device Tested ✓

RJ-45PTC6S-x
CAT6 STP Push Through Plug



FLUKE device Tested ✓

RJ-45PTC6AS-x
CAT6A STP Push Through Plug



Liner included



FLUKE device Tested ✓

PTC-CP
Compact Push Through Crimper



- Built-in stripping cutting blade
- Built-in conductor straightener
- Push-button lock for easy storage
- Replaceable trimming blade
- Designed to be terminated with the DYNAMIX push-through crimp & cut tools
- Compatible with "Platinum Tools" crimp & cut tools

PTC-HD
Heavy-Duty Push Through Crimper



- Ratcheted handle
- Built-in stripping blade cutting blade
- Replaceable trimming blade
- Designed to be terminated with the DYNAMIX push-through crimp & cut tools
- Compatible with "Platinum Tools" crimp & cut tools

ALSO AVAILABLE:

SRB-75-BLK-20



DYNAMIX Strain Relief Boot, OD: 7.5mm, Colour Black. 20 Pack. Suited for Cat6A Shielded Cable

SRB-UTP-BLK-20



DYNAMIX BLACK RJ45 Strain Relief Boot (6.0mm Outside Diameter). 20pk bag.

Please note we took the up-most care to compile the information in this datasheet. To the best of our knowledge all info provided were correct at the time of creation. Should any specs change we try to update info accordingly. Information are subject to change without notice. In the case that you find any irregularity please inform our team at contactus@dynamix.co.nz

Last updated: 9 October 2025

09102025_TL/CG

www.dynamix.co.nz